

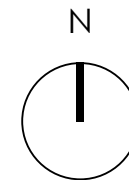
Port Charlotte Beach Park



Introductions



Port Charlotte Beach Park
Charlotte County



Agenda

- Project Description
- Project Schedule
- Parking Analysis
- Recap of Public Input Sessions
- Current Design Status of the Recreation Center
- Amenity Masterplan
- Questions/Comments

Project Objectives - Recreation Center

- Design a functional Recreation Center that aligns with community values
- Provide a facility that addresses current challenges and deficiencies
- Identify site development constraints

Port Charlotte Beach Park Schedule

Recreation Center

- Design Development
 - Forecast Completion: November 2024
- Construction
 - Estimated Start Date: January 2025
 - Forecast Completion: January 2026

Parking Analysis

- The park improvements have undergone a thorough parking analysis performed by a licensed Civil engineer.
- The project will provide more than the code minimum required number of spaces; including adequate ADA parking close to the building entries.

Parking Analysis

- Existing parking counts:
 - 24 ADA spaces
 - 253 Other
- Concept parking counts:
 - 26 ADA spaces
 - 254 Other
- Controlled service/delivery area

Recap of Public Input Sessions

- The new Recreation Center is planned to be approximately 20,000 square feet.
- The Recreation Center will provide rentable event spaces for weddings, large parties, ceremonies, youth programs, professional meetings, and County meetings.
- The elevated deck at the Recreation Center will be accessible from the rentable event spaces and to the public.
- The Board provided approval that the Pool and Pool-House move up to the Tier 1 projects.

Current Design Status of the Recreation Center



Port Charlotte Beach Park
Charlotte County

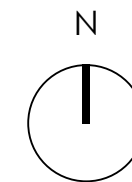
SWEETSPARKMAN
ARCHITECTURE & INTERIORS

Site Plan



1. New Recreation Center
2. Future Pool Development
3. Beach
4. Existing Pavilions
5. Existing Courts
6. New Drop-Off
7. Parking
8. Existing Boat Ramp
9. Existing Sailing Center
10. Future Boardwalk
11. Existing Pier

Port Charlotte Beach Park
Charlotte County



SWEETSPARKMAN
ARCHITECTURE & INTERIORS



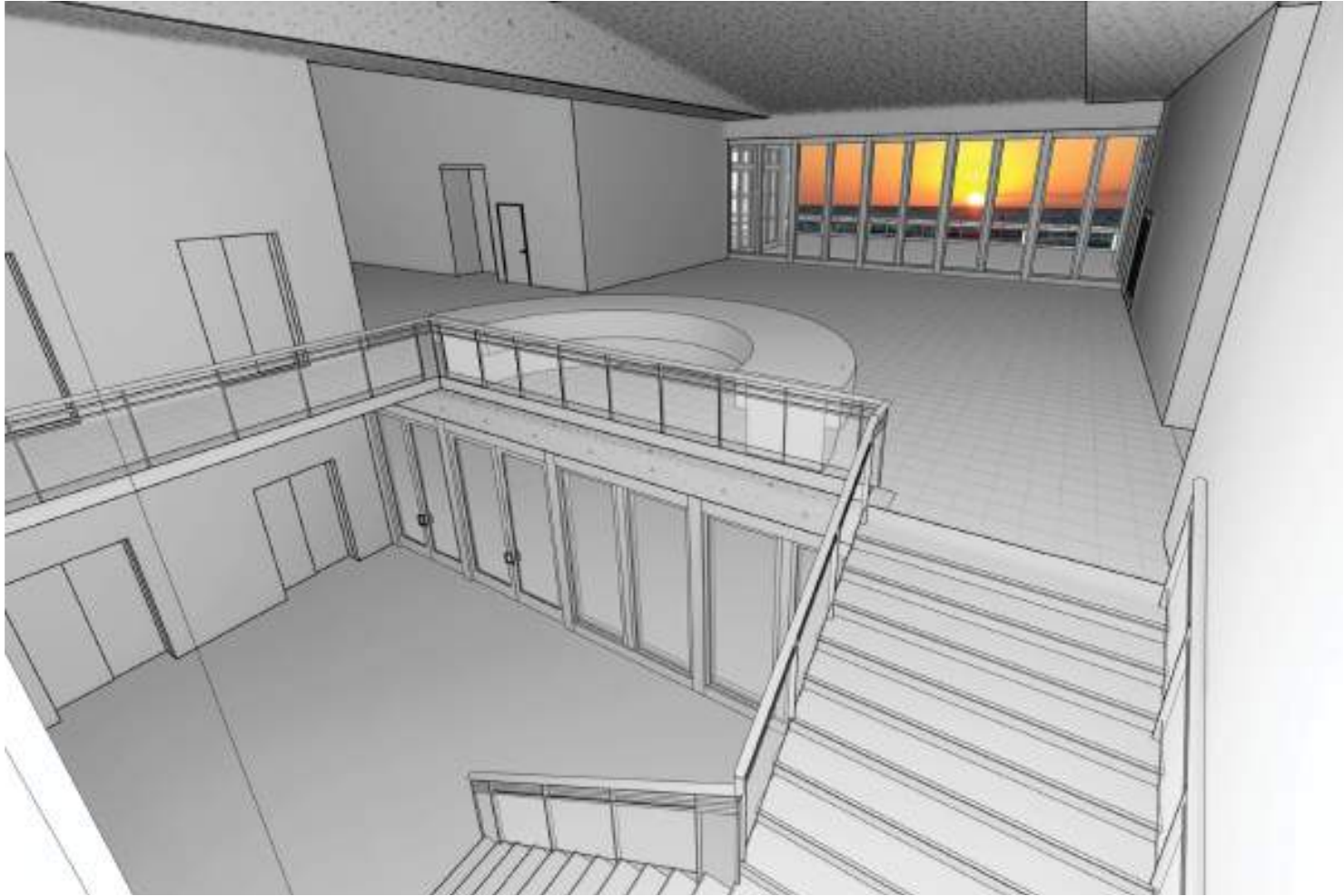
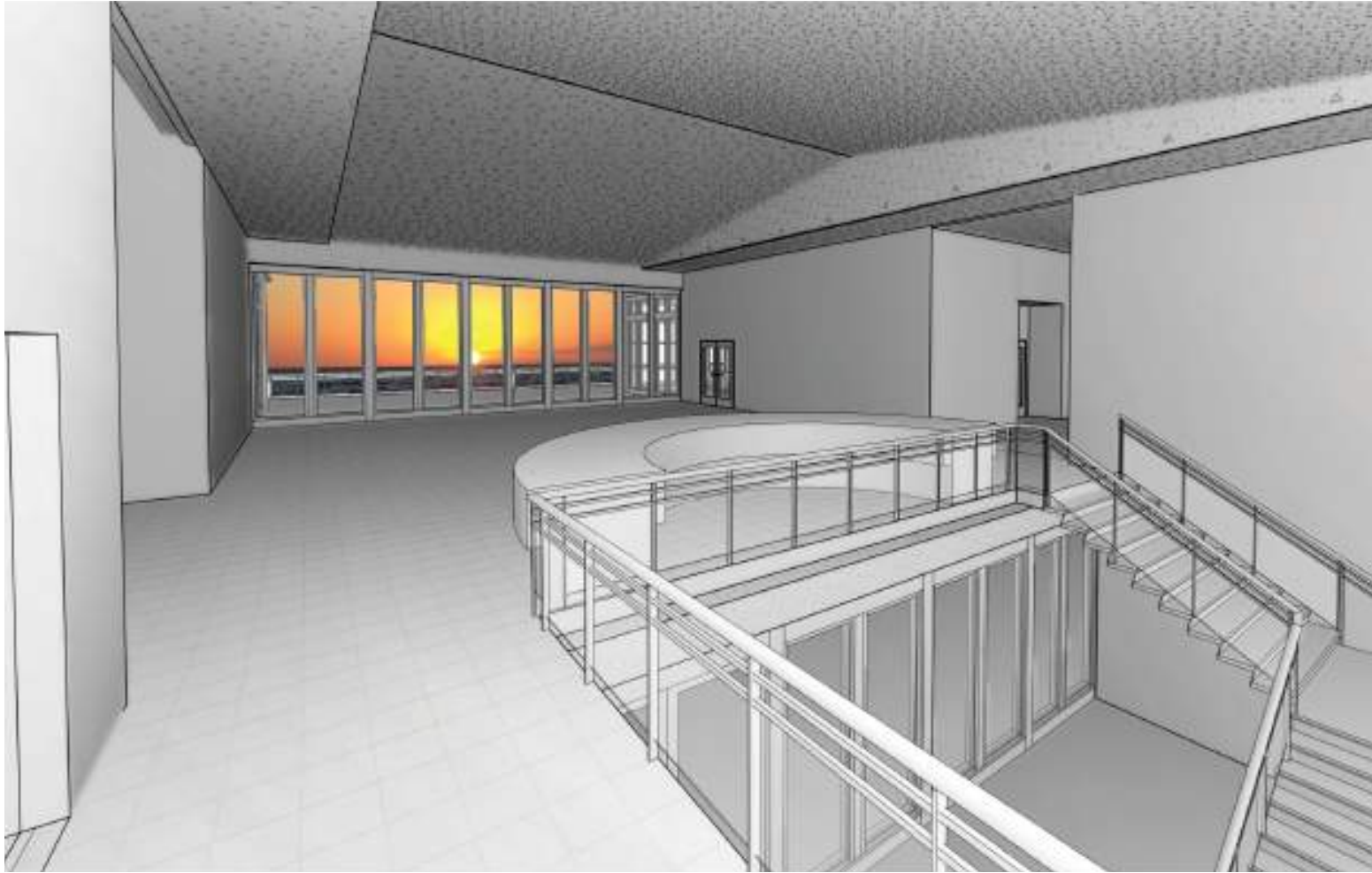
Event Space



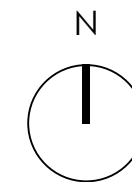
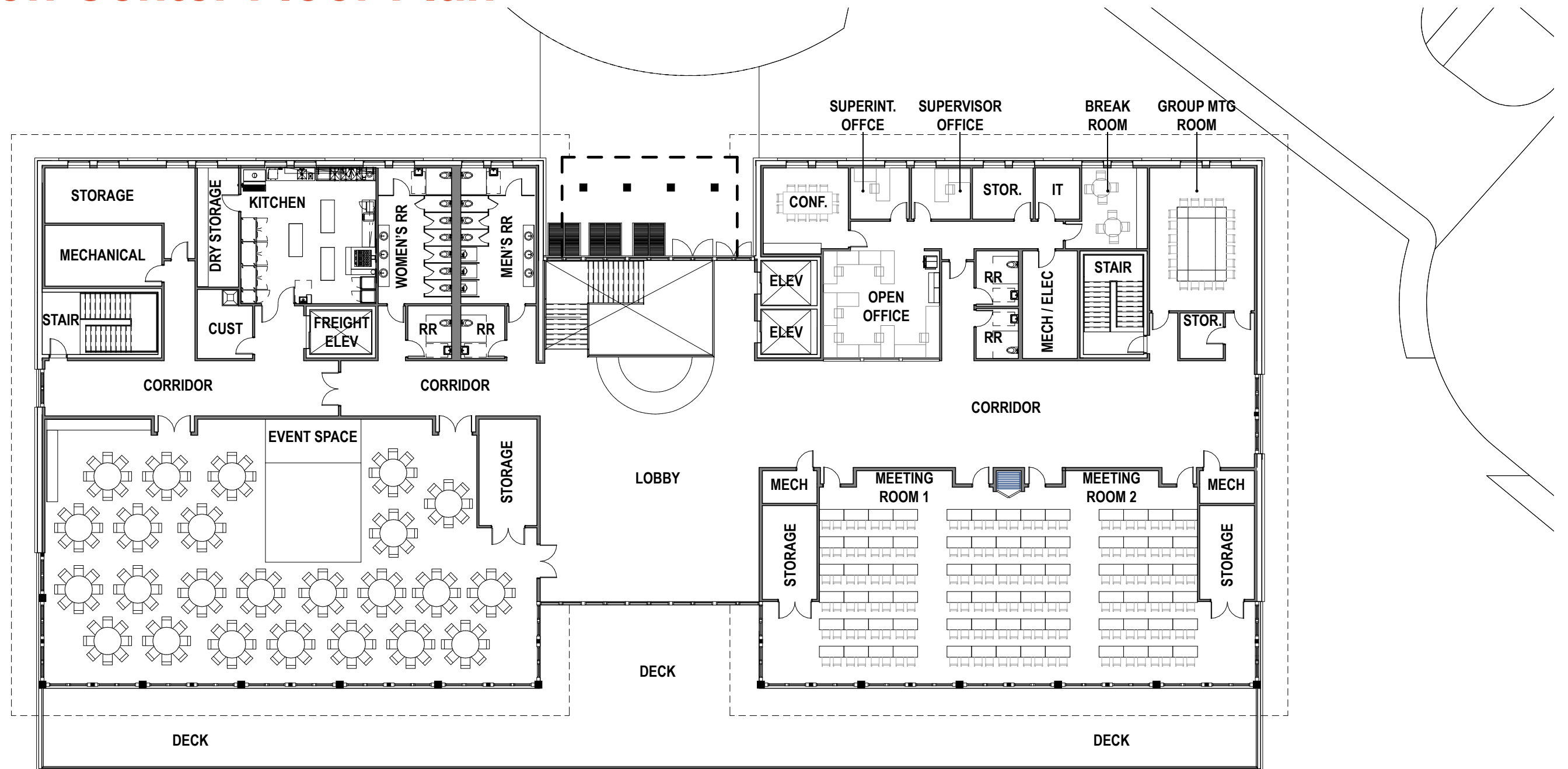
Port Charlotte Beach Park
Charlotte County

SWEETSPARKMAN
ARCHITECTURE & INTERIORS

Lobby



Recreation Center Floor Plan



Amenity Masterplan



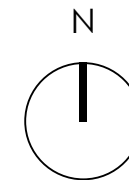
Port Charlotte Beach Park
Charlotte County

SWEETSPARKMAN
ARCHITECTURE & INTERIORS

Project Objectives - Amenity Masterplan

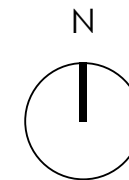
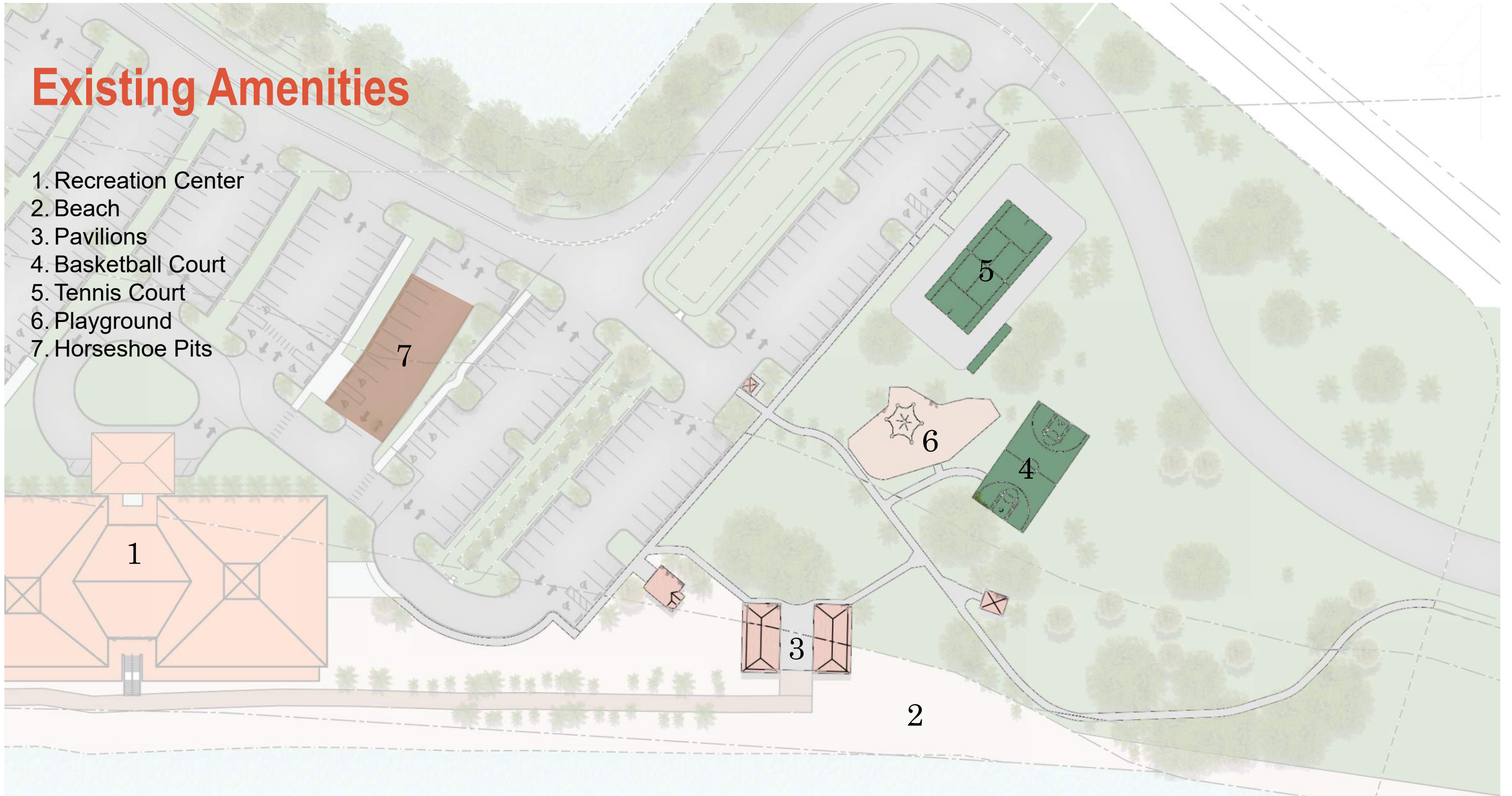
- Gather and evaluate community values
- Identify and address current challenges and deficiencies
- Determine amenity locations and functional adjacencies
- Identify site development constraints

Existing Conditions

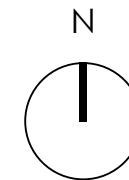
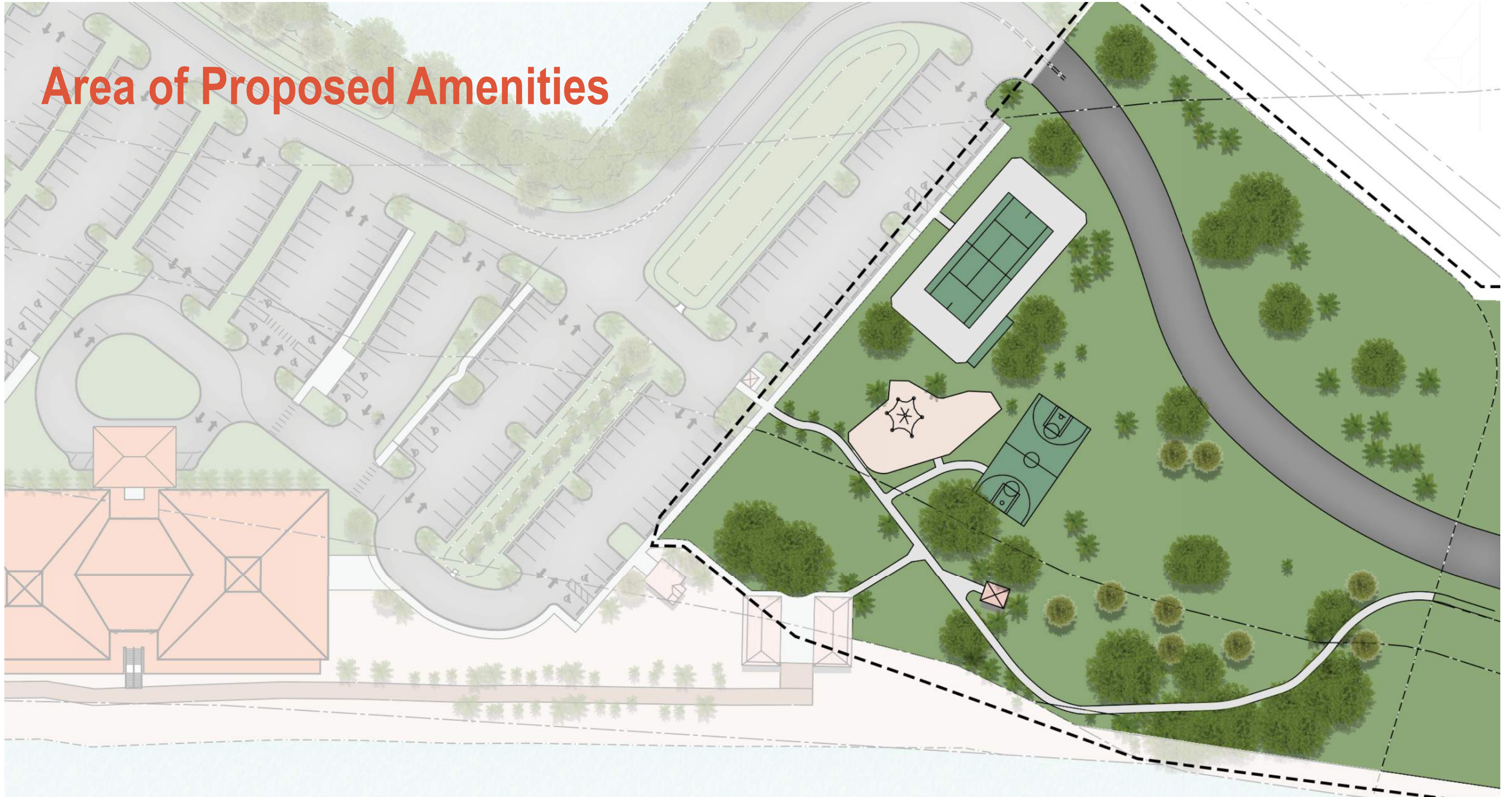


Existing Amenities

- 1. Recreation Center
- 2. Beach
- 3. Pavilions
- 4. Basketball Court
- 5. Tennis Court
- 6. Playground
- 7. Horseshoe Pits



Area of Proposed Amenities



Proposed Amenities (New or Relocation)



Fitness Pod

Port Charlotte Beach Park
Charlotte County

Proposed Amenities (New or Relocation)



Bocce Ball



Horseshoe Pit



Port Charlotte Beach Park
Charlotte County



Proposed Amenities (New or Relocation)



Playground

Port Charlotte Beach Park
Charlotte County



Proposed Amenities (New or Relocation)



Volleyball



Cornhole



Port Charlotte Beach Park
Charlotte County



Proposed Amenities (New or Relocation)



Multi-purpose Field /
Green Space



Open Space

Proposed Amenities (New or Relocation)



Pavilions / Shade Structures



Walking Paths

Questions / Comments



Port Charlotte Beach Park
Charlotte County

SWEETSPARKMAN
ARCHITECTURE & INTERIORS