

What? Tree Code or Landscape Code?

Landscape plans are regulated separately from the tree protection code, however there are minimum landscaping requirements which can be met through the preservation of existing trees and non-invasive vegetation.

Landscape Plan alterations?

Alterations to approved landscape plans may only be made with the prior permission of the Growth Management Department. All proposed changes need to be documented on a revised set of plans and resubmitted for review prior to making any alterations.

Helpful Links

www.municode.com — for code information
www.floridata.com — plant information
www.fpl.com/residential/trees — Right Tree, Right Place

How can Single Family Development benefit from landscaping?

A well planned Florida Friendly landscape can lower maintenance costs by reducing

- Costly mowing
- Pesticide treatment
- Fertilizer application
- Irrigation expenses

Some techniques include using native or drought tolerant plants, depressing landscape beds instead of raising them, using porous paving such as shell or gravel instead of concrete, and minimizing turf areas by using other groundcovers. Large canopy trees help cool the air and will reduce electric bills if the trees shade living areas. All of these measures together can aid the county in reducing its overall heat island effect, a phenomena associated with the increase in paved and built areas and the decrease in pervious undeveloped areas.



CURRENT PLANNING AND ZONING DIVISION LANDSCAPE PLANS



FREQUENTLY ASKED QUESTIONS

Charlotte County Government
Growth Management Department
Administration Center
18500 Murdock Circle
Port Charlotte, FL 33948

Phone: 941.743.1964

Fax: 941.743.1598

Website: CharlotteCountyFL.com

Who is subject to a landscape plan review?

Any development other than single family or two unit residential development is required to submit a landscape plan, signed and sealed by a landscape architect, for approval by the Growth Management Department.

- All plans that are associated with a building permit need to be delivered to the Building and Construction Services Department to be included with the project building permit folder.
- 24"x36" landscape plans should be folded in quarters along the 24" axis and then in half horizontally.
- Before final approval, Site Plan review requires 5 sets of plans while all building permit applications shall require 4 sets.



Distributed by Charlotte County Government.

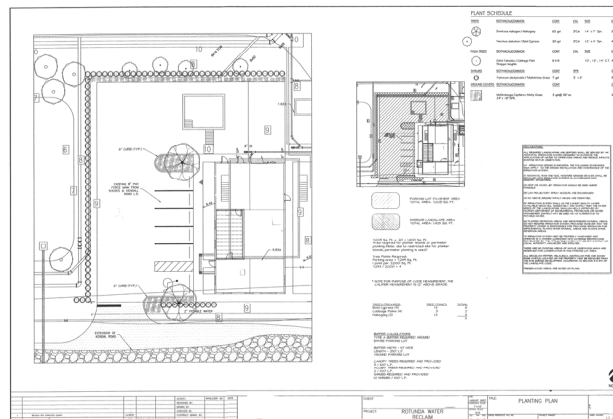
When? How long does it take for the landscape plan review after one is submitted?

Depending on the complexity of the plans and the degree to which the plans are in compliance, a review can take anywhere from 1 day to 4 days to complete. Plans that are rejected need to be revised to come into minimum compliance with Charlotte County Code and be resubmitted for review, prior to approval.

How Much?

Initial landscape reviews not included in a Site Plan Review package are \$80.00.

Subsequent reviews, if necessary, are \$95.00 each.



Florida Friendly Landscaping

Florida Friendly Landscape Principles emphasize water conservation techniques in the landscape. Native plant communities have evolved special adaptations that make them especially well suited to the seasonally sporadic rainfall in this region of the state. Landscapes designed with Florida Friendly Landscape principles require less fertilizer, survive with less to no supplemental water, require less pesticides and provide sustenance and habitat for native wildlife.

What are the plan requirements?

1. Submit plans no larger than 24"x36"
2. Verify that all sheets are signed and sealed by a landscape design professional as defined by Chapter 481, Florida Statutes.
3. Print plans to a scale no larger than 1"=20' preferably.
4. Use a hierarchy of line weights that enhances legibility of plans.
5. Verify that a scale and north arrow are included.
6. Are all utilities, above and below ground identified on the plans?
7. Have existing trees been identified?
8. If there are Heritage trees on site, are they labeled?

For more information:
*Charlotte County Code
Article 18, Section 3-5-395*