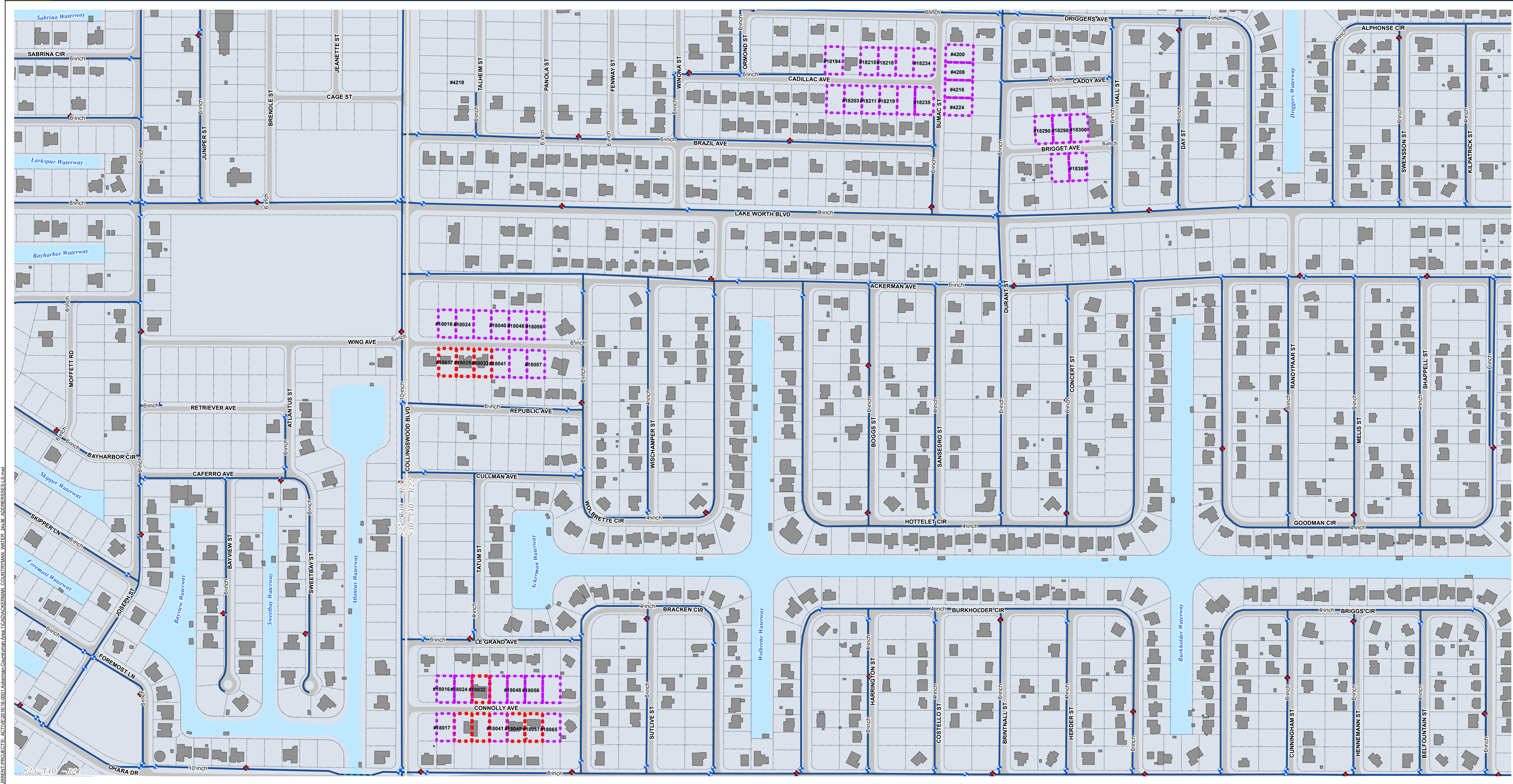
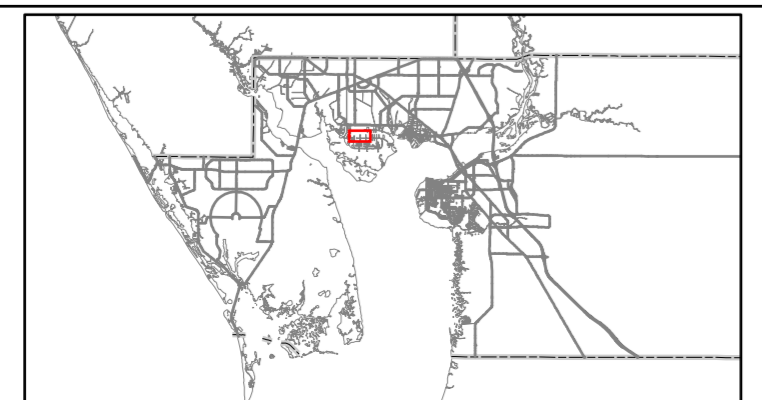


Ackerman-Countryman Area 1 POTABLE WATER - PROPOSED ASSESSED PARCELS



Title: ACKERMAN_COUNTRYMAN_WATER_24x36_ADDRSSSES-LS
 Date: 7/2/2019
 Created By: David E. Cain
 Coordinate System: NAD 1983 StatePlane Florida West FIPS 9902 Feet
 Projection: Transverse Mercator
 Center: 82° 42' 55.6" W 26° 54' 1.6164" N
 DISCLAIMER: This map is a representation of compiled information. It is believed to be an accurate and true depiction for the stated purpose, but Charlotte County Utilities and its employees make no guarantee, implied or otherwise to the accuracy or completeness. We therefore do not accept any responsibility as to its use. This is not a survey or is to be used for design. No part of this map may be reproduced or transmitted by any means without the expressed written permission from Charlotte County Utilities.
 © Copyright 2019 Port Charlotte, FL by Charlotte County
 Credits: Charlotte County GIS, FDOT



Legend

- OCCUPIED
- VACANT

