



# **Charlotte Harbor Water Quality Initiative**

East and West Spring Lakes

Project Update

May 9, 2017



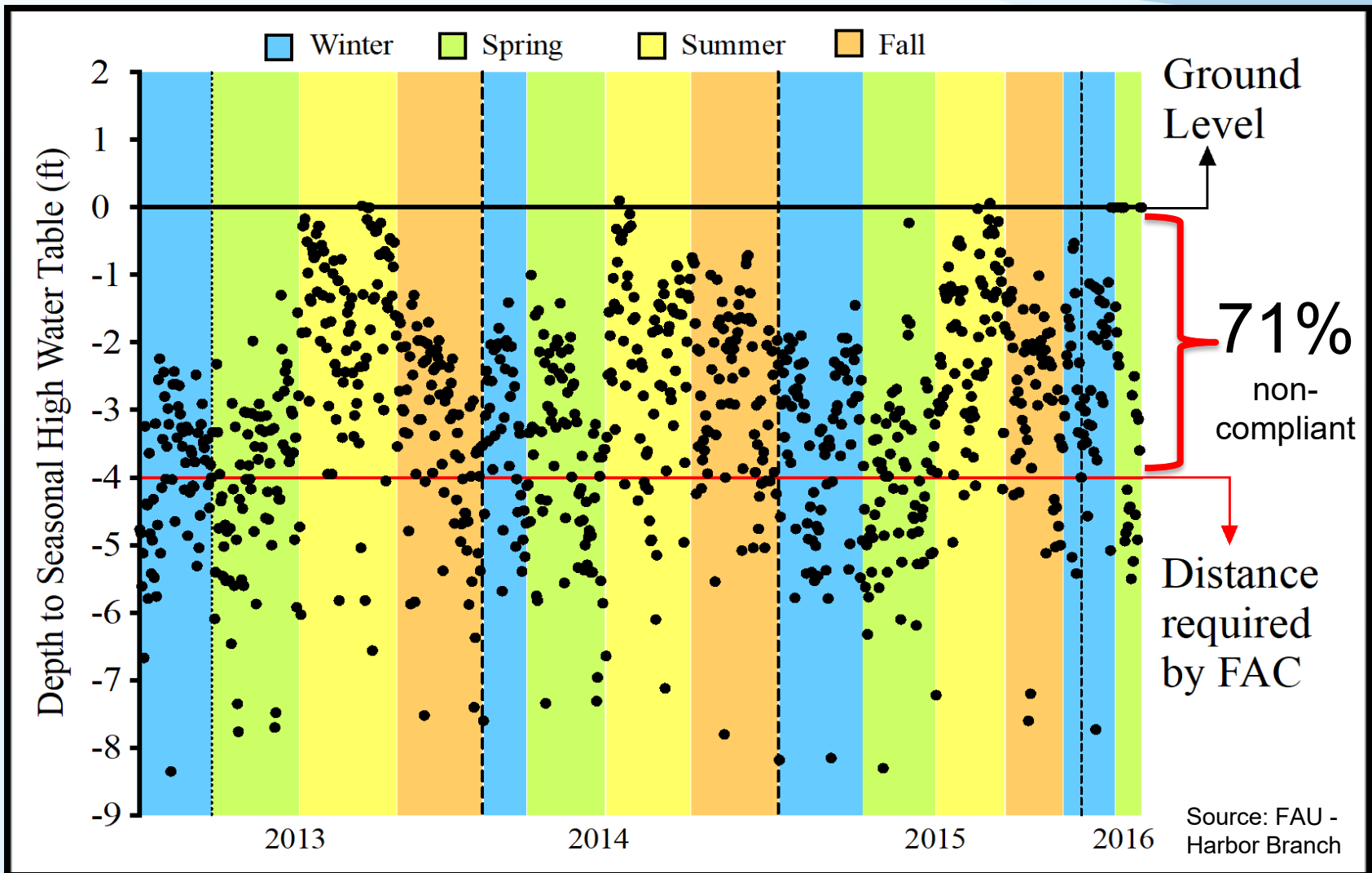
# Charlotte Harbor Water Quality Initiative

- Encompasses the Utilities Department's projects to improve water quality primarily through septic to sewer conversions, wastewater infrastructure and associated stormwater improvements
- Aims to reduce nutrient and bacterial pollution throughout the County's service area; and includes many partners focused on protecting our estuarine ecosystems, and the health and safety of our citizens





# EWSL: Distance of Septic Drainfield to Seasonal High Water Table





# EWSL Neighbor Outreach

- Prior to start of initial construction, 4 public outreach meetings
- Contract D public outreach meeting was Feb. 23, 2017
- Customers can sign up to receive construction updates from [SpringlakesProject.com](http://SpringlakesProject.com)

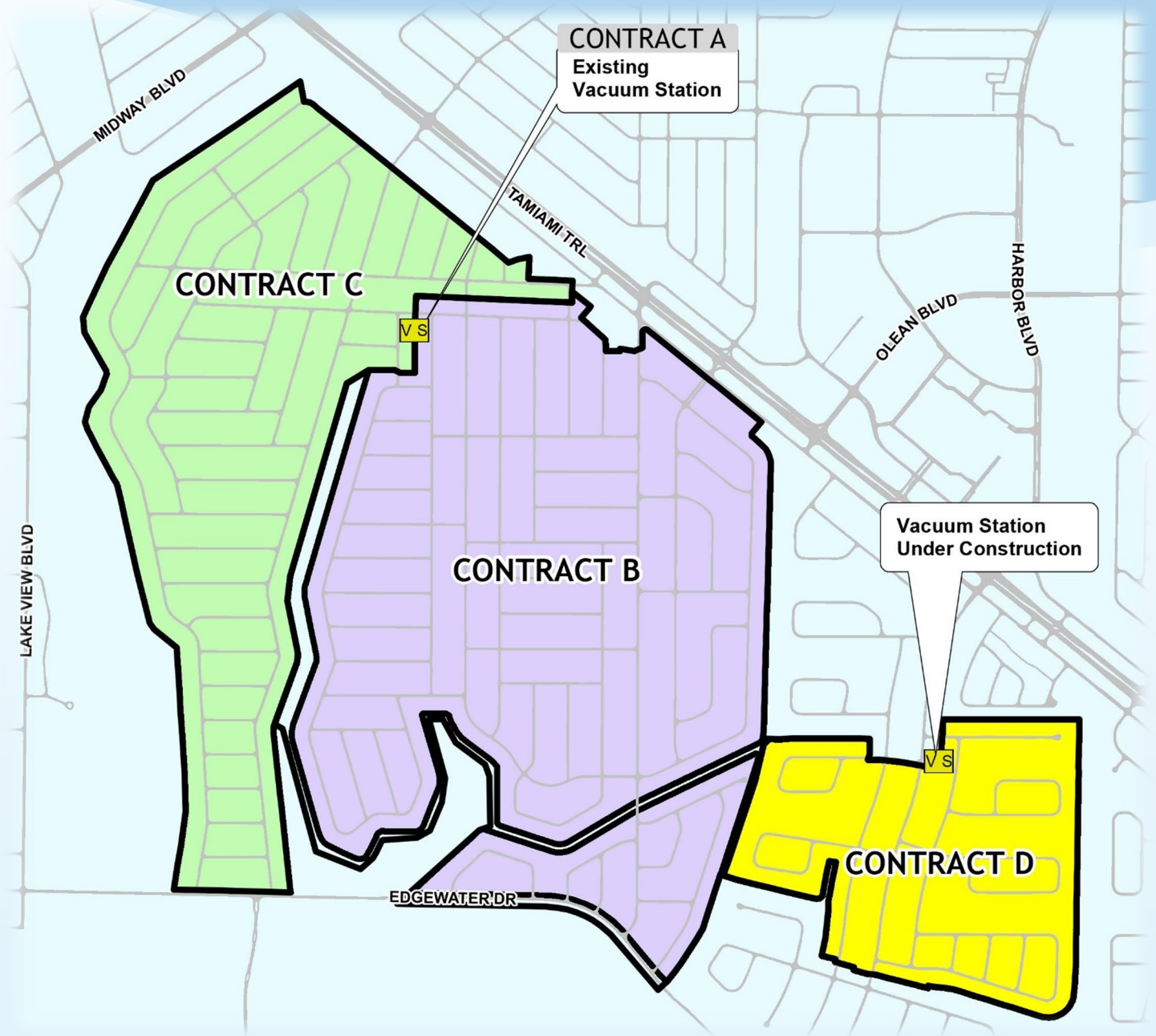






# East and West Spring Lakes (EWSL)

## Project Areas



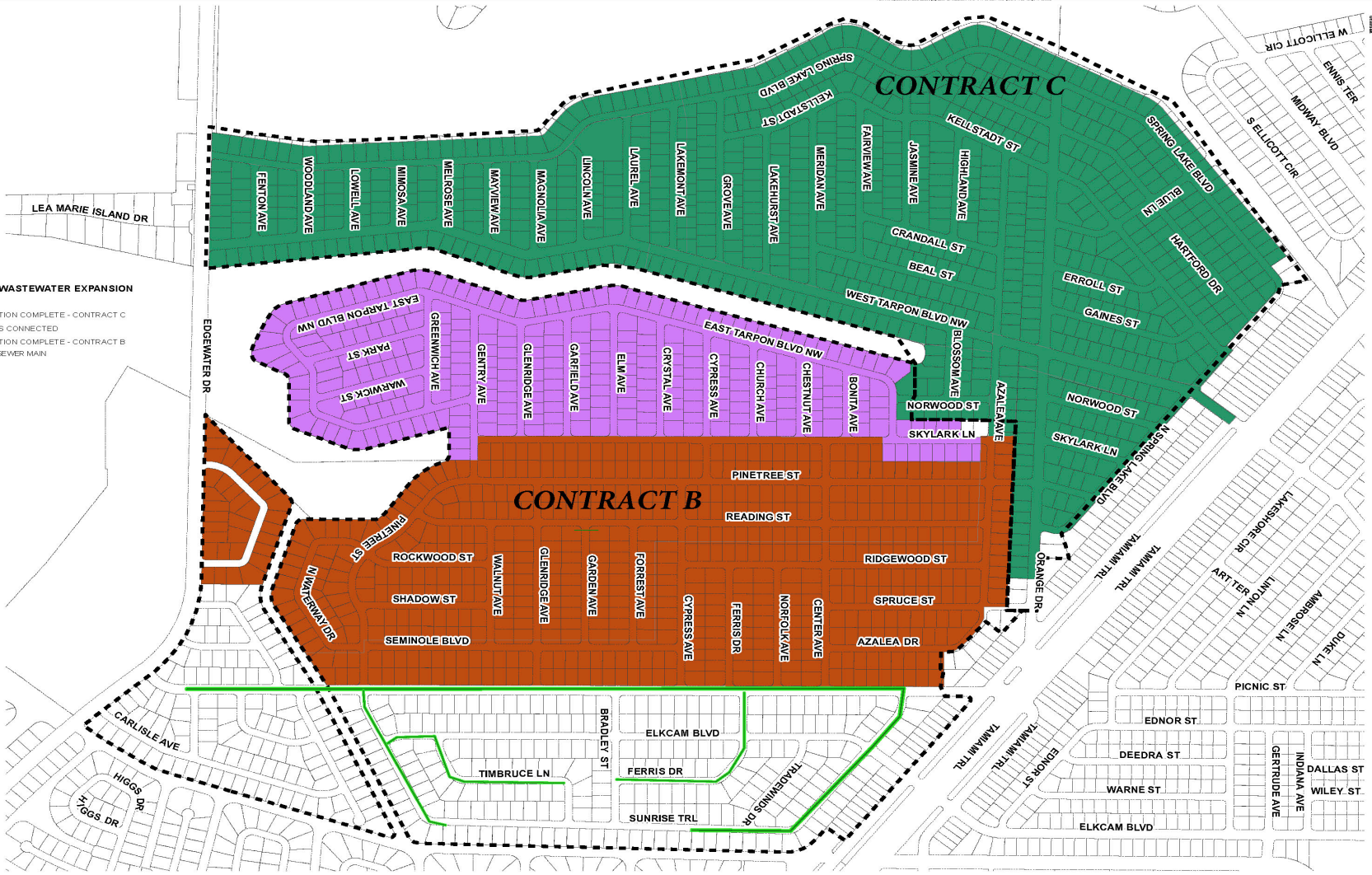


# Project Status

Document Path: W:\Projects\MSBU\Future\_Zones\Spring\_Lake\_Pilot\_Survey\CONTRACT STATUS\CONTRACT\_CONSTRUCTION STATUS.mxd

**SPRING LAKE WASTEWATER EXPANSION STATUS**

- CONSTRUCTION COMPLETE - CONTRACT C
- CUSTOMERS CONNECTED
- CONSTRUCTION COMPLETE - CONTRACT B
- INSTALLED SEWER MAIN







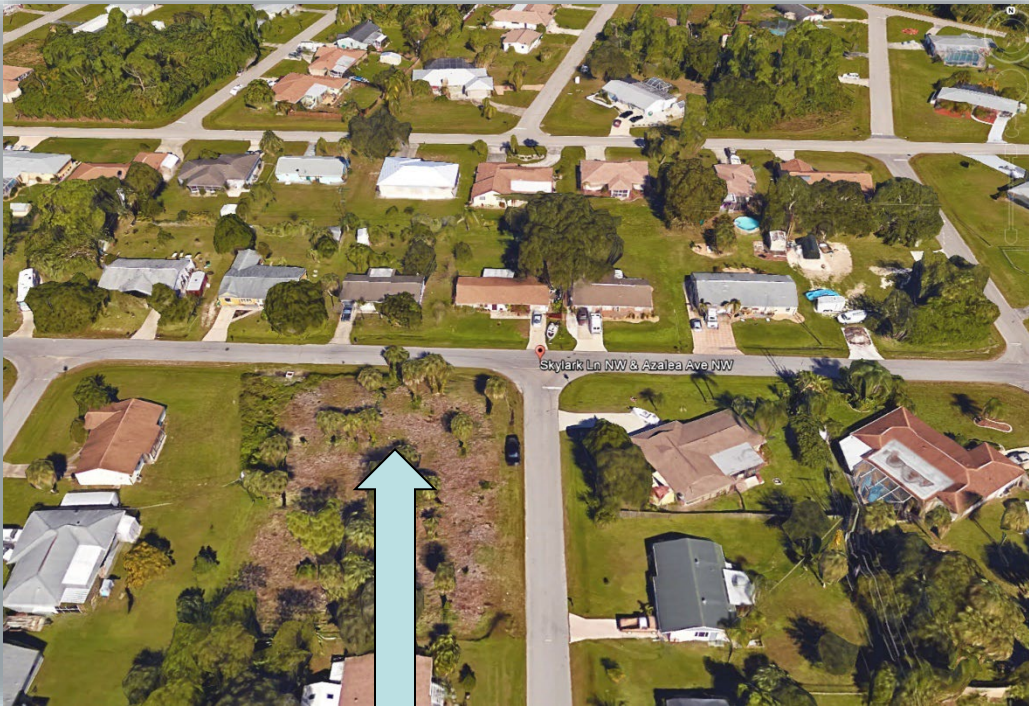
# EWSL Project Overview



- Central Sewer Service for 2,455 Equivalent Residential Units (ERUs)
- Pre and post water quality monitoring
- Stormwater and drainage improvements
- Driveway & sod restoration
- Paving to be completed by Public Works upon completion of on-lot connections



# Contract A: Vacuum Station



Site of vacuum station

- Contractor: Poole & Kent
- Estimated construction/equipment cost: \$2.03M
- Completed and operational in April 2016
- Has an effective odor-control mulch bed & Florida-Friendly Landscaping





# Vacuum Lift Station Installation







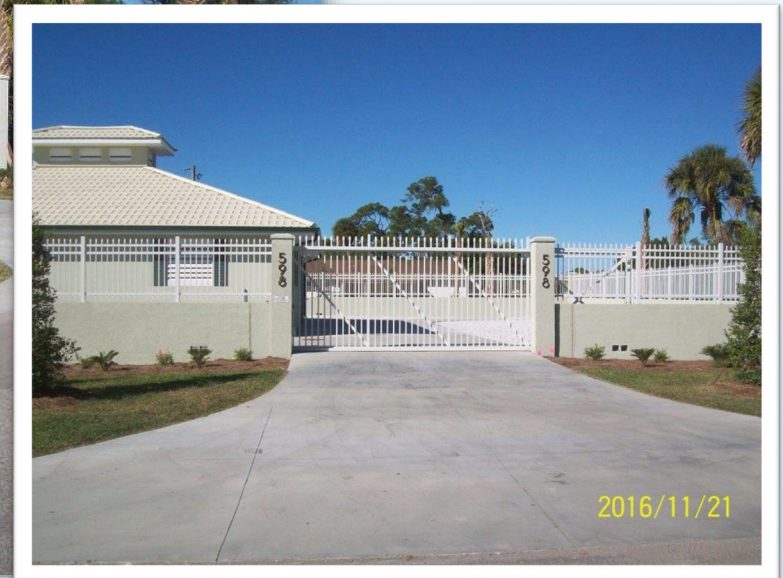
# Vacuum Station Construction







# Landscaped Vacuum Station







# Landscaped Vacuum Station





# Inside the Vacuum Station







# Inside the Vacuum Station







# Contract B: Status Update

- Contractor: Guymann Construction
- Estimated construction/equipment cost: \$10.6M
- Estimated completion date: Fall 2017
- Connected (active as of 3/31/17): 219
- Total ERUs: 1,255
- 5 staging areas
  - Agreements with individual owners
  - Will be vacated & seeded within a month of completion





# Contract C: Status Update



- Contractor: Stevens and Layton
- Estimated construction/equipment cost: \$6.99M
- Estimated completion date: Summer 2017
- Connected (active as of 3/31/17): 16
- Total ERUs: 801
- Staging areas
  - Agreements with individual owners
  - Will be vacated & seeded within a month of completion





# Before Stormwater Improvements





# After Stormwater & Sod Improvements







# Construction of Vacuum Pit







# Driveway & Sod Restored



2017/03/29





# Extensive Dewatering Required







# Engineered Crossings of Lines







# Contract D: Status Update

- Contractor: Metro Equipment Services
- Estimated construction/equipment cost: \$7.85M
- Construction Start: April 2017
- Estimated completion date: Summer 2018
- Total ERUs: 399
- One staging area
  - Agreements with individual owners
  - Will be vacated & seeded within a month of completion







# County Construction & Staging Area

- Provides better customer service
- Essential for staff operations
- More cost effective for mobilization
- Aim to close by end of 2018
- Parks & Rec Dept. to maintain after closure



NOTE:  
Adjacent contractor staging site is being prepped for closure in April 2017.







# EWSL Project: Lessons Learned

- Realized importance of long-term water quality monitoring program for future projects.
- Reinforced importance of Sewer Master Plan Development
- Understanding compliance issues associated with SRF funding
- Continuing hardship programs are necessary for serving our community





# Future Projects: Recommendations



- Secure easements as early as possible
- Incorporate Public Works at the beginning of project
- When possible, align with 20-year paving plan
- Consider aging infrastructure replacement during planning
- Use the same contractor to build both vacuum station and the pipeline infrastructure
- Simplify accounting methods for expenses





# Future Projects: Recommendations

- Recommend residents become customers of Utilities upon BCC project approval
- Simplify on-lot easement agreement
- Work more closely with the Department of Health on roles in serving distressed residents and failures
- BCC will need to determine how to fund Hardship or Deferral Program





# EWSL Financial Summary

	Spring Lake Sewer Project	Infrastructure Enhancements	Total
<b>Expenditures</b>			
Design/Permitting/Inspection	\$2,214,699		\$2,214,699
Construction	\$21,370,065	\$6,070,788	\$27,440,853
On Lot	\$2,717,371		\$2,717,371
Miscellaneous	\$2,479,481		\$2,479,481
Rebates & Hardship	\$1,104,641	\$0	\$1,104,641
Monitoring & Pump outs	\$384,840	\$0	\$384,840
<b>Total</b>	<b>\$30,271,097</b>	<b>\$6,070,788</b>	<b>\$36,341,885</b>
<b>Funding Sources</b>			
MSBU assessments	\$17,762,839	\$0	\$17,762,839
Grant funding	\$3,699,826	\$835,213	\$4,535,039
Utilities subsidy	\$8,808,432	\$5,235,575	\$14,044,007
<b>Total</b>	<b>\$30,271,097</b>	<b>\$6,070,788</b>	<b>\$36,341,885</b>
<b>Average cost per ERU</b>	<b>\$15,098</b>		