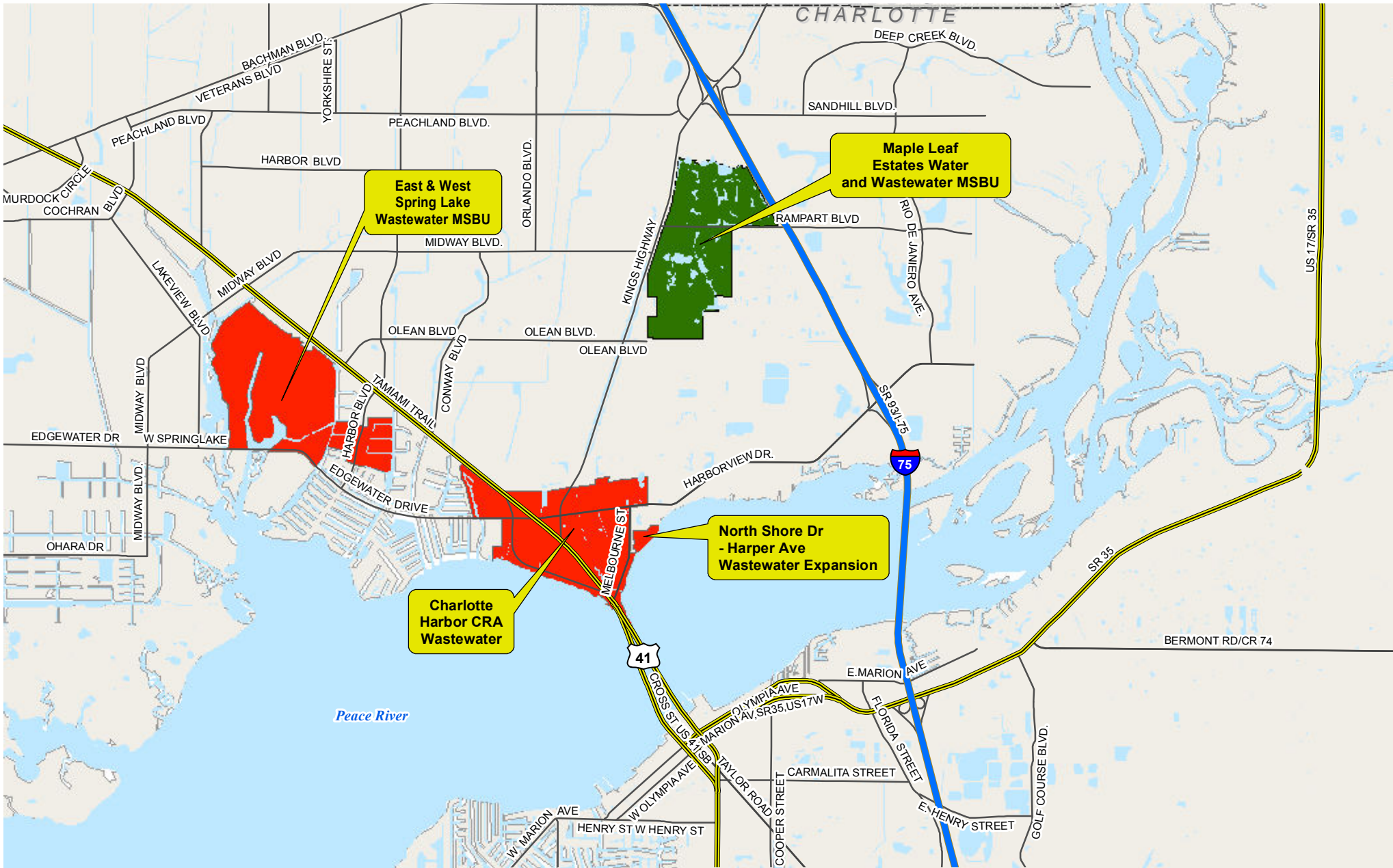




CHARLOTTE COUNTY

CHARLOTTE COUNTY WATER AND WASTEWATER MSBU's

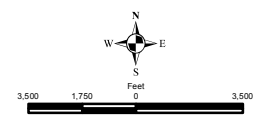
CENTRAL COUNTY



Title: CENTRAL COUNTY
 Date: 11/15/2015
 Created By: David E. Cain
 Coordinate System: NAD 1983 StatePlane Florida West FIPS 0902 Feet
 Projection: Transverse Mercator
 Center: 82°29'9.136"W 26°58'30.896"N
 DISCLAIMER: This map is a representation of compiled information. It is believed to be an accurate and true depiction for the stated purpose, but Charlotte County Utilities and its employees make no guarantee, implied or otherwise, to the accuracy or completeness. We therefore do not accept any responsibilities as to its use. This is not a survey or is to be used for design. No part of this map may be reproduced or transmitted by any means without the expressed written permission from Charlotte County Utilities.
 © Copyright 2015 Port Charlotte, FL by Charlotte County
 Credits: FDOT road data, SWFWMD county boundaries, 2000 Census Data - urban areas

WATER AND WASTEWATER MSBU'S

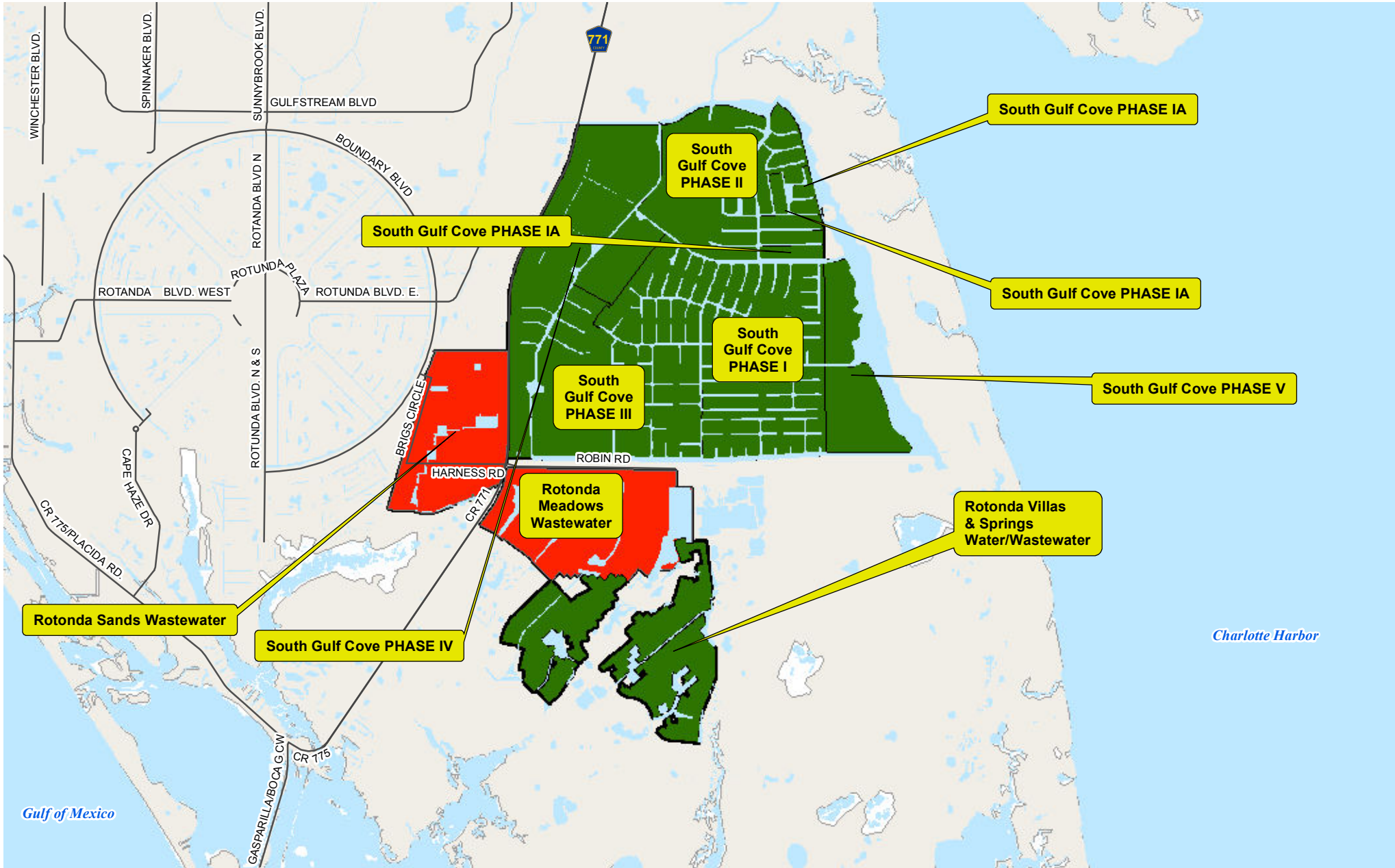
- Wastewater Only
- Water & Wastewater





CHARLOTTE COUNTY

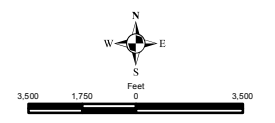
CHARLOTTE COUNTY WATER AND WASTEWATER MSBU'S WEST COUNTY



Title: WEST COUNTY
 Date: 11/13/2015
 Created By: David E. Cain
 Coordinate System: NAD 1983 StatePlane Florida West FIPS 0902 Feet
 Projection: Transverse Mercator
 Center: 82° 12' 30.8088" W 26° 52' 30.5544" N
 DISCLAIMER: This map is a representation of compiled information. It is believed to be an accurate and true depiction for the stated purpose, but Charlotte County Utilities and its employees make no guarantees, explicit or otherwise, to the accuracy or completeness. We therefore do not accept any responsibilities as to its use. This is not a survey or is to be used for design. No part of this map may be reproduced or transmitted by any means without the expressed written permission from Charlotte County Utilities.
 © Copyright 2015 Port Charlotte, FL by Charlotte County
 Credits: FDOT road data, SWFWMD county boundaries, 2000 Census Data - urban areas

WATER AND WASTEWATER MSBU'S

- Wastewater Only
- Water & Wastewater

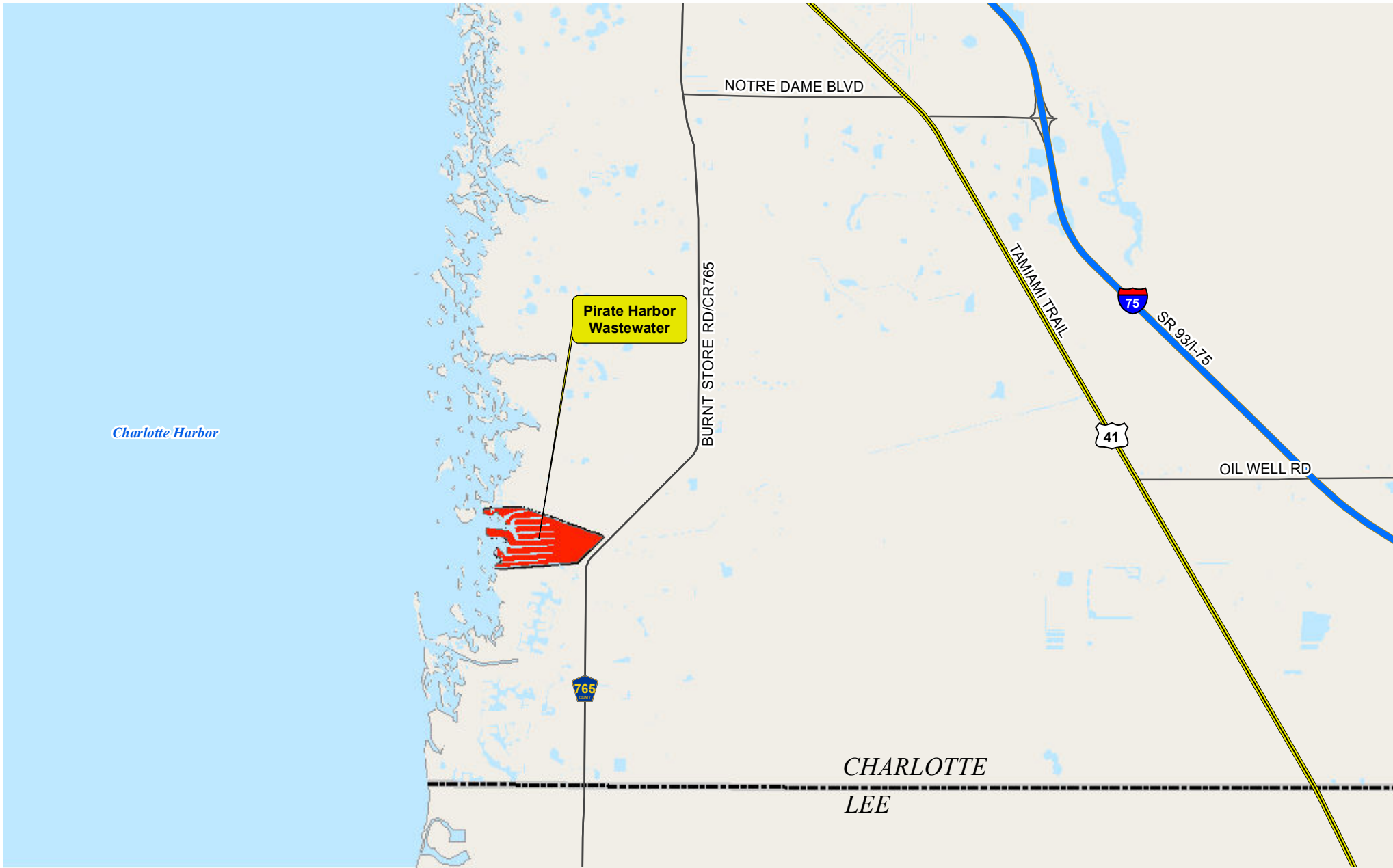




CHARLOTTE COUNTY

CHARLOTTE COUNTY WATER AND WASTEWATER MSBU's

SOUTH COUNTY



Title: SOUTH COUNTY
 Date: 11/13/2015
 Created By: David E. Cain
 Coordinate System: NAD 1983 StatePlane Florida West FIPS 0902 Feet
 Projection: Transverse Mercator
 Center: 82°11'6.7772" W 26°48'58.8462" N
 DISCLAIMER: This map is a representation of compiled information. It is believed to be an accurate and true depiction for the stated purpose, but Charlotte County Utilities and its employees make no guarantee, implied or otherwise to the accuracy or completeness. We therefore do not accept any responsibilities as to its use. This is not a survey or is to be used for design. No part of this map may be reproduced or transmitted by any means without the expressed written permission from Charlotte County Utilities.
 © Copyright 2015 Port Charlotte, FL by Charlotte County
 Credits: FDOT-road data; SWFWMD-county boundaries; 2000 Census Data-urban areas

WATER AND WASTEWATER MSBU'S

- Wastewater Only
- Water & Wastewater

