

Legend
 Charlotte County

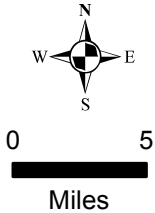
Path (E:\GIS\Projects\CharlotteCo.S\HCP\ArcMap\HCP_Maps\Location.mxd) By: ACS Date: 6/19/2012

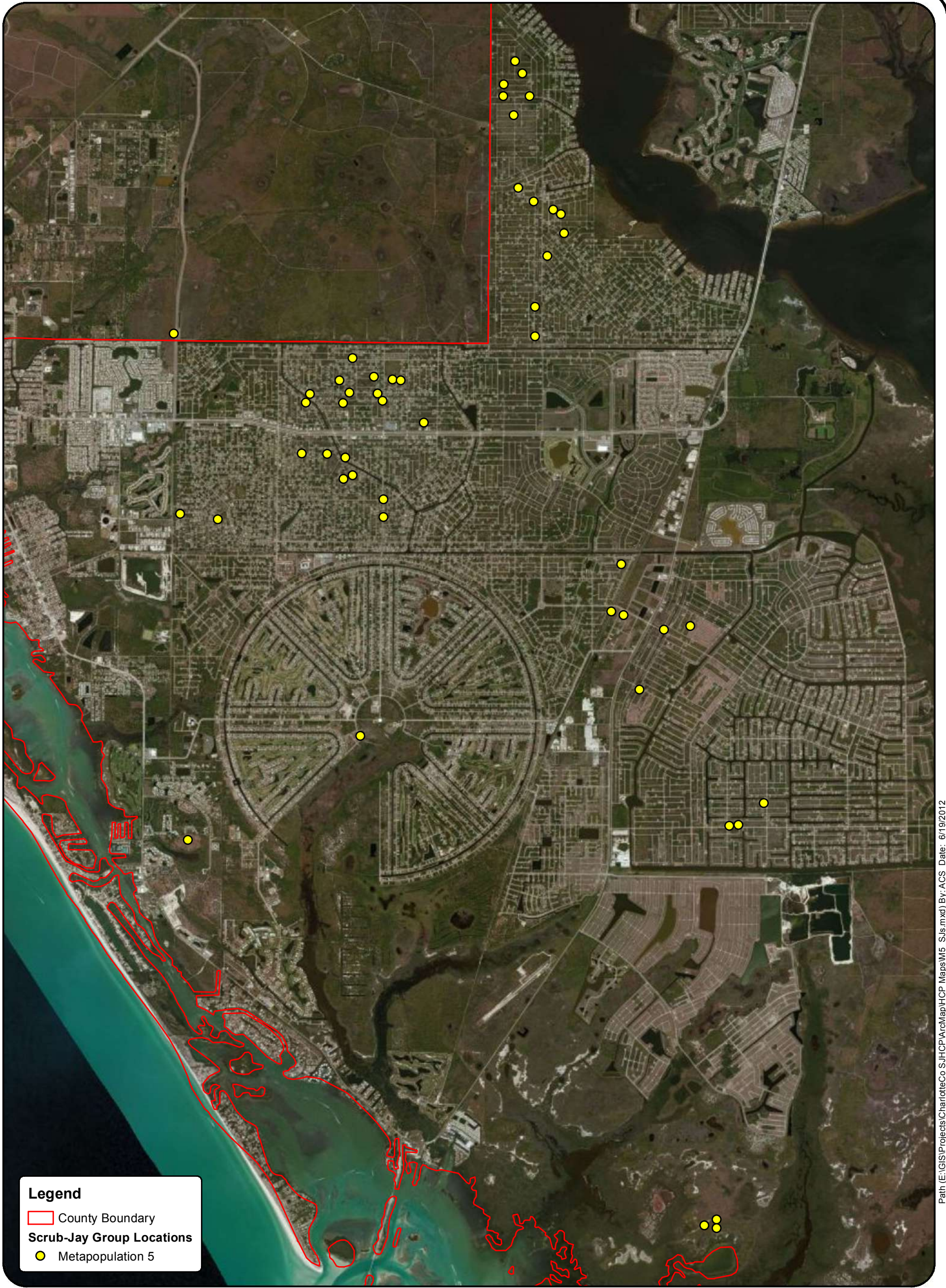


735 Lakeview Drive
 Wimauma, FL 33598
 Tel. 813.642.0799
 Fax 813.642.0380

**Charlotte County Scrub-Jay Habitat Conservation Plan
 Charlotte County, Florida**

**Figure 2.1
 General Location Map**





Legend

- County Boundary
- Scrub-Jay Group Locations**
- Metapopulation 5

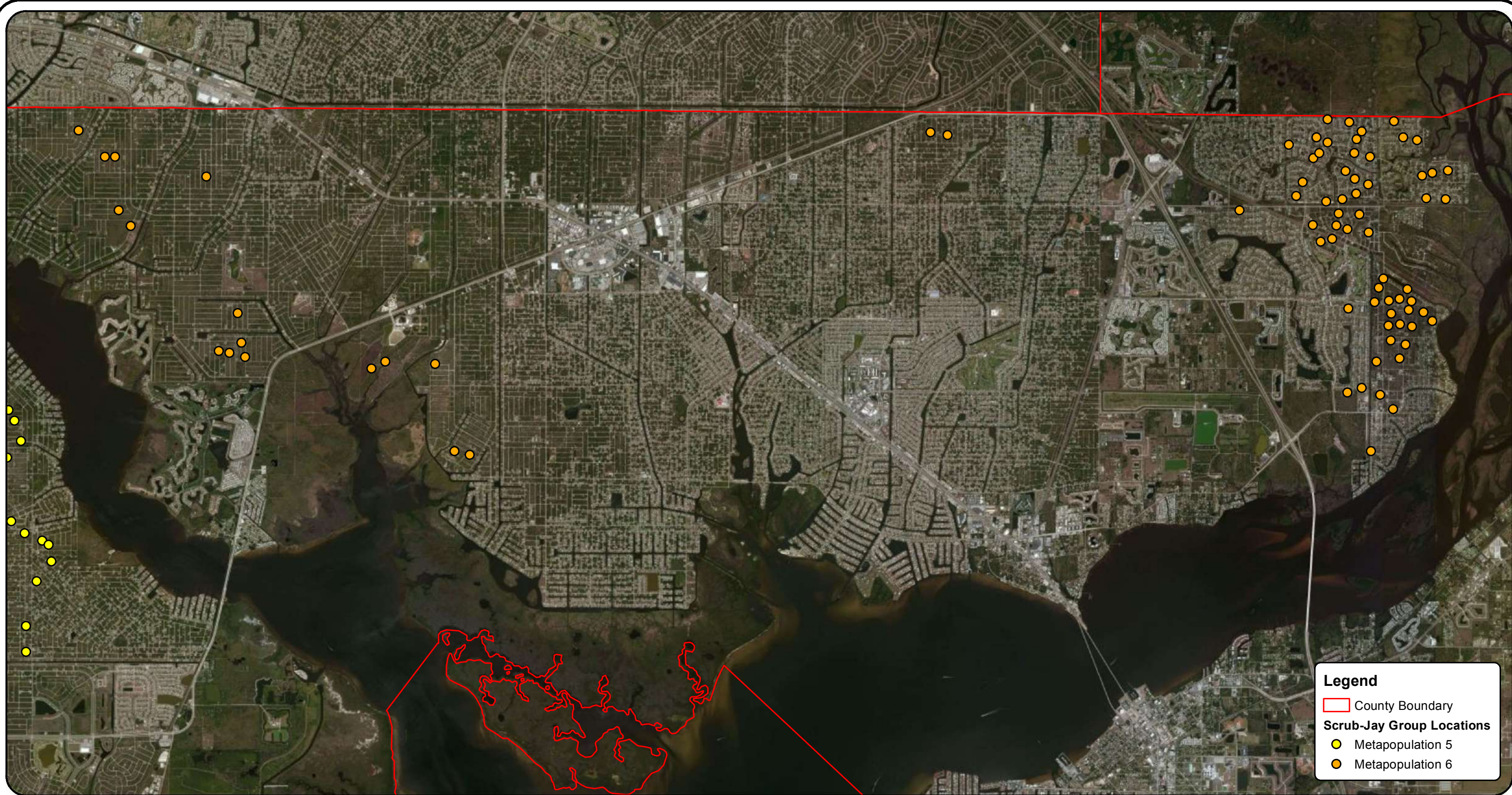
**Charlotte County Scrub-Jay Habitat Conservation Plan
Charlotte County, Florida**

**Figure 2.2
Metapopulation 5 Scrub-Jay Group Locations**




QUEST
ecology
735 Lakeview Drive
Wimauma, FL 33598
Tel. 813.642.0799
Fax 813.642.0380

Path: (E:\GIS\Projects\CharlotteCo_S\HCP\ArcMap\HCP_Maps\M5_S.us.mxd) By: ACS Date: 6/19/2012



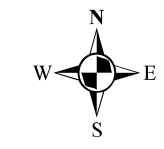
Path: E:\GIS\Projects\CharlotteCo_SJHCP\ArcMap\HCP_Maps\M6_S.js.mxd By: ACS Date: 6/19/2012

**Charlotte County Scrub-Jay Habitat Conservation Plan
Charlotte County, Florida**

**Figure 2.3
Metapopulation 6 Scrub-Jay Group Locations**

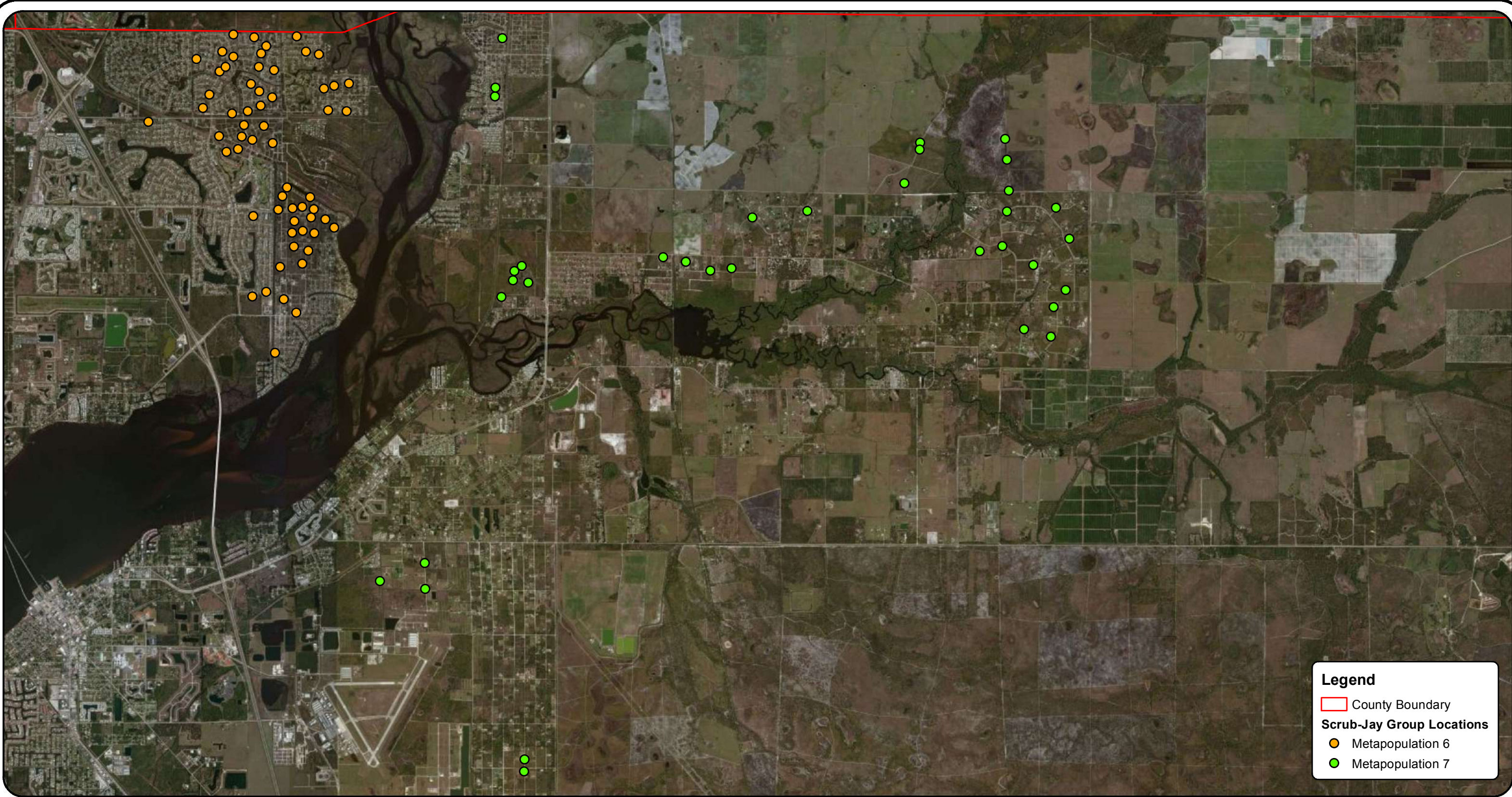
Legend

- County Boundary
- Scrub-Jay Group Locations**
- Metapopulation 5
- Metapopulation 6




QUEST
ecology

735 Lakeview Drive
Wimauma, FL 33598
Tel. 813.642.0799
Fax 813.642.0380



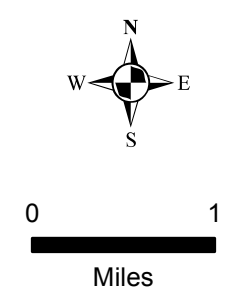
Legend

- County Boundary
- Scrub-Jay Group Locations**
- Metapopulation 6
- Metapopulation 7

**Charlotte County Scrub-Jay Habitat Conservation Plan
Charlotte County, Florida**

**Figure 2.4
Metapopulation 7 Scrub-Jay Group Locations**

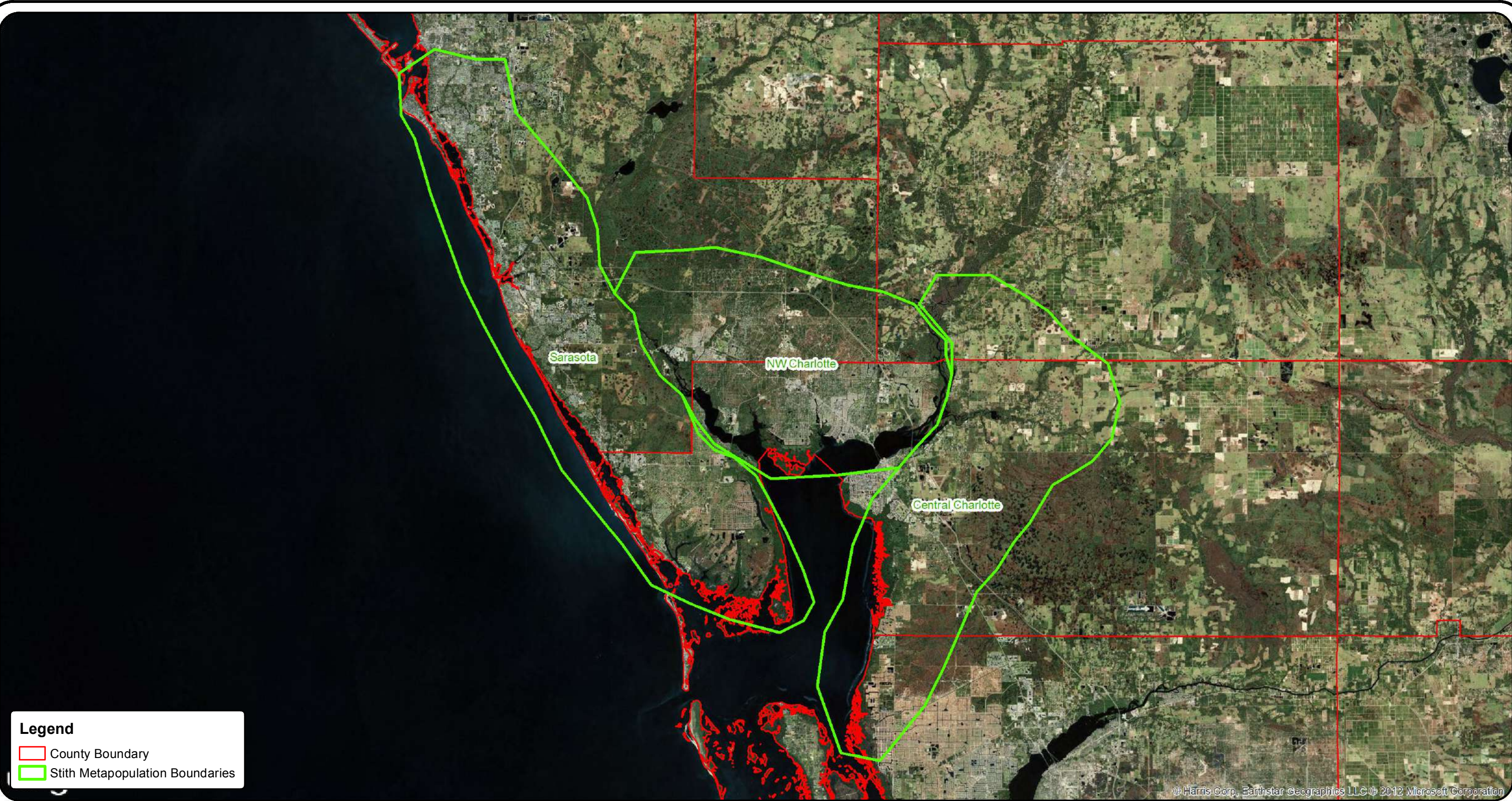
Note: One group location at Babcock Ranch to the southeast is not depicted here.



QUEST
ecology

735 Lakeview Drive
Wimauma, FL 33598
Tel. 813.642.0799
Fax 813.642.0380

Path: E:\GIS\Projects\CharlotteCo_SJHCP\ArcMap\HCP_Map\M7_S.js.mxd By: ACS Date: 6/19/2012



**Charlotte County Scrub-Jay Habitat Conservation Plan
Charlotte County, Florida**

**Figure 2.5
Stith Metapopulation Scrub-Jay Boundaries**

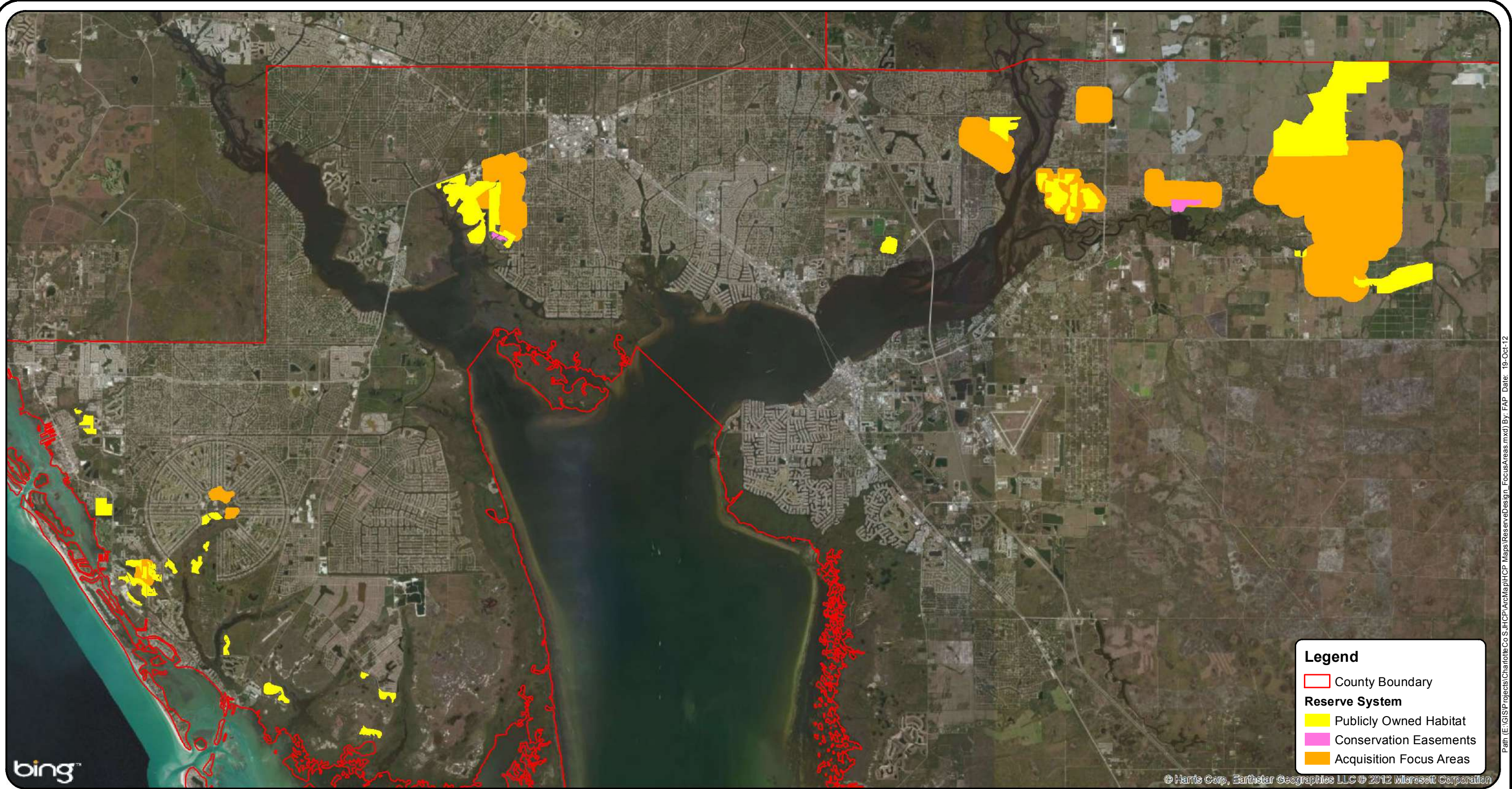


QUEST
ecology

735 Lakeview Drive
Wimauma, FL 33598
Tel. 813.642.0799
Fax 813.642.0380



0 5
Miles



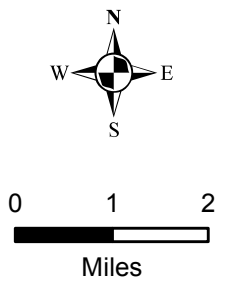
Legend

- County Boundary
- Reserve System**
- Publicly Owned Habitat
- Conservation Easements
- Acquisition Focus Areas

© Harris Corp, Earthstar Geographics LLC © 2012 Microsoft Corporation

**Charlotte County Scrub-Jay Habitat Conservation Plan
Charlotte County, Florida**

**Figure 4.1
Reserve System**



bing™


QUEST
ecology
 735 Lakeview Drive
 Wimauma, FL 33598
 Tel. 813.642.0799
 Fax 813.642.0380

Path: (E:\GIS\Projects\Charlotte Co S.HCP\ArcMap\HCP_Maps\ReserveDesign_FocusAreas.mxd) By: FAP Date: 19-Oct-12