

CHARLOTTE COUNTY

Subdivision of Rotonda Sands

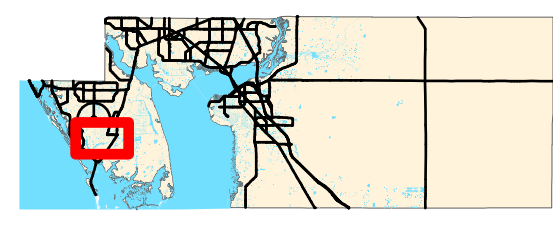
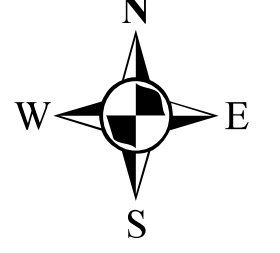


Stateplane Projection
 Datum: NAD83
 Units: Feet

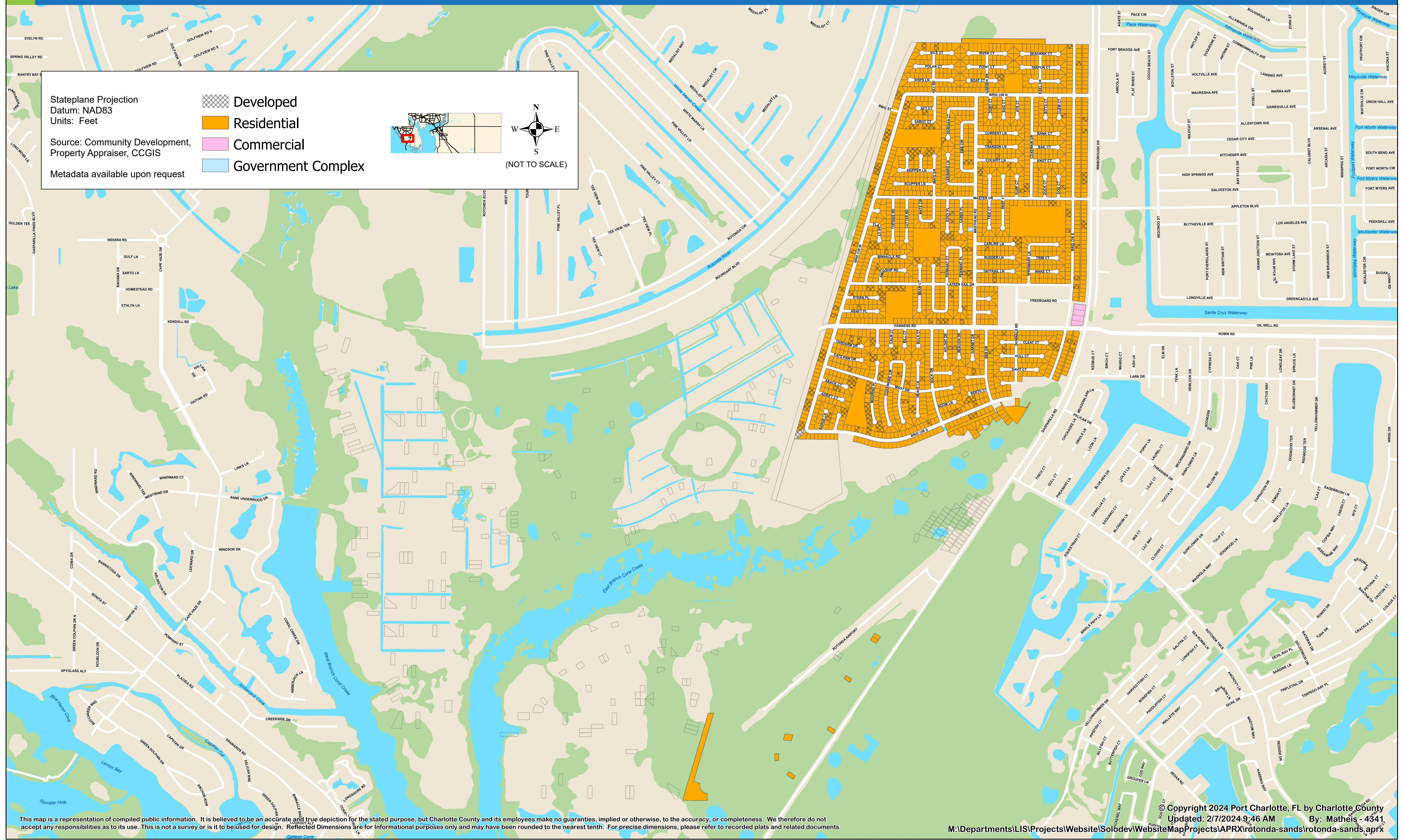
Source: Community Development,
 Property Appraiser, CCGIS

Metadata available upon request

- Developed
- Residential
- Commercial
- Government Complex

(NOT TO SCALE)



This map is a representation of compiled public information. It is believed to be an accurate and true depiction for the stated purpose, but Charlotte County and its employees make no guaranties, implied or otherwise, to the accuracy, or completeness. We therefore do not accept any responsibilities as to its use. This is not a survey or it to be used for design. Reflected Dimensions are for informational purposes only and may have been rounded to the nearest tenth. For precise dimensions, please refer to recorded plats and related documents.